

SPECIFICATION

Modular vinyl floor covering, with glass fibre reinforcement(**click). Polyurethane reinforcement. In tile format, with bevelled edges. Product standard: EN ISO 10582.

CERTIFICATION & CLASSIFICATION	STANDARDS	OXIDE 0.3mm	OXIDE 0.5mm
Type of floor covering	EN ISO 10582	Compact resilient floor covering	Compact resilient floor covering
CE certification	EN 14041	Yes	Yes
Classification	EN ISO 10874	Residential: 21	Residential: 21
		Commercial: 31	Commercial: 33
		-	Industrial: 42

TECHNICAL PERFORMANCES	STANDARDS	OXIDE 0.3mm	OXIDE 0.5mm
Dimensional stability	EN ISO 23999	≤ 0.10 %	≤ 0.10 %
Reaction to fire	EN 13501-1	Bfl s1 on concrete and Cfl s1 on wood substrate	Bfl s1 on concrete and Cfl s1 on wood substrate
Residual indentation	EN ISO 24343-1	≤ 0.05 mm	≤ 0.05 mm
Furniture leg	EN 424	No damage	No damage
Castor chair	EN ISO 4918	No damage	No damage
Curl resultant to heat	EN ISO 23999	≤ 2 mm	≤ 2 mm
Underfloor heating	EN ISO 10456	Suitable – max. 27°C	Suitable – max. 27°C
Thermal resistance	ISO 10456	0.03 m2 K/W	0.03 m2 K/W
Impact sound reduction	EN ISO EN 717-2	ΔLw = 2 dB	ΔLw = 2 dB
Reduction of in room impact noise	NF EN ISO 31-074	Class C (Ln,e,w < 85dB)	Class C (Ln,e,w < 85dB)
Light fastness	EN ISO 105-B02	≥ 6	≥ 6
Resistance to chemicals	EN ISO 26987	High resistance	High resistance
Slip resistance	EN 13893	μ ≥ 0.30	μ ≥ 0.30
	DIN 51130	R9	R9
Electrical properties	EN 1015	≤ 2kV on concrete	≤ 2kV on concrete
	EN 1081	> 109 Ω	> 109 Ω
Adhesion wear layer	EN 431	≥ 50N / 50mm	≥ 50N / 50mm
Colours		10	10

PACKING

Tile Size	Click		Dry Back			
	12x24 inch	18x18 inch	24x24 inch	18x36 inch	36x36 inch	
	304.8x609.6mm	457.2x457.2mm	609.6x609.6mm	457.2x914.4mm	914.4x914.4mm	
Thickness	4.0mm	5.0mm	3.0mm			
Weight/Box	16.2kg	19.2kg	17.5kg			
Wear Layer	0.3mm	0.5mm	0.3mm / 0.5mm / 0.7mm			
Pcs/Box	10	10	16	9	8	4
Sqm/Box	1.858	1.858	3.3445			
Box/Pit	60	56	72	30	72	72
Pit/Cntr	22	22	20	48	20	20





OXIDE

NEW COLLECTION

6 COLOURS / 5 SIZES

DRY BACK

457.2x457.2mm / 18x18 inch
609.6x609.6mm / 24x24 inch

457.2x914.4mm / 18x36 inch
914.4x914.4mm / 36x36 inch

CLICK

304.8x609.6mm
12x24 inch

A lifetime of sustainable flooring

- 100% recyclable.
- Contributes to improved indoor air quality with VOC emissions below quantifiable level, less than 10ug/m3 after 28 days.
- Uses a phthalate-free technology, based on alternative plasticizers that can be used for sensitive applications such as the production of toys, food packaging and medical devices.

1 Surface embossing & textures:
close to real materials

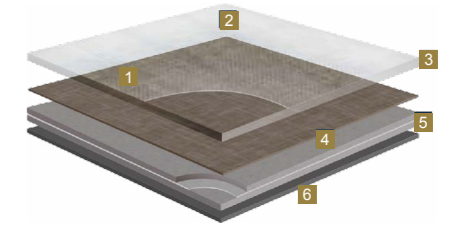
2 UV reinforcement:
extreme resistance and easy low-cost maintenance

3 0.3/0.5mm pure PVC transparent wear layer:
exceptionally hardwearing and indentation resistant

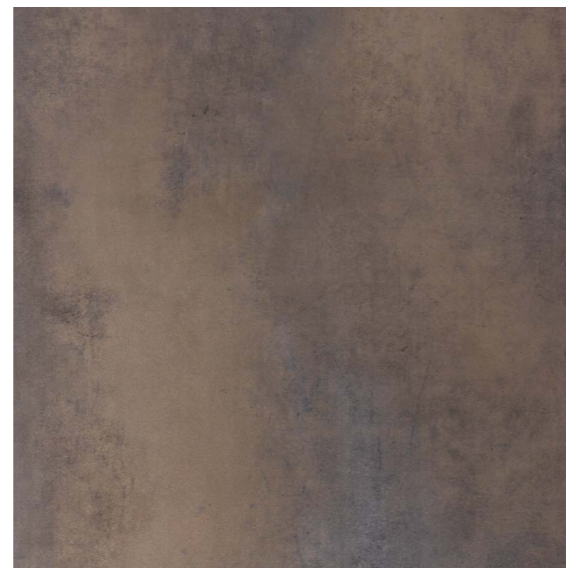
4 6 colours options in high definition printing; *with great customisation possibilities*

5 Unique composite structure built with solid homogeneous calandered layers reinforced with non-woven glass fibre: *exceptional dimensional stability and excellent resistance to tear and indentation*

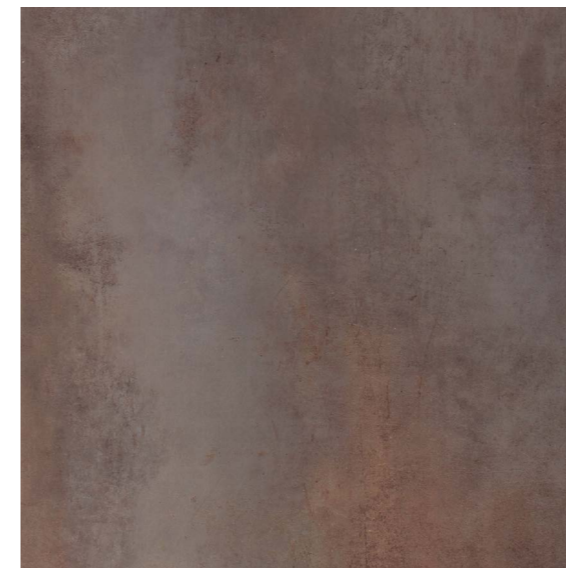
6 PVC backing



SILVER



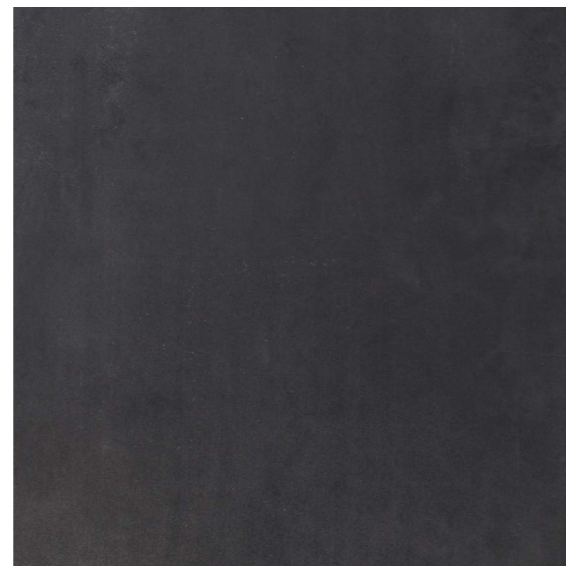
GOLD



RUST



COPPER



BLACK



CARBON



BLACK
457.2x457.2mm / 18x18 inch